

# pottery barn kids

## thomas drawer chest

- Please read all instructions before beginning assembly.
- For ease of assembly two people are recommended.
- Save all packing materials until assembly is complete to avoid accidentally discarding smaller parts or hardware.
- Note: The feet are packed in a box, which is placed inside the top left drawer for shipment. One extra drawer knob is included for your convenience.

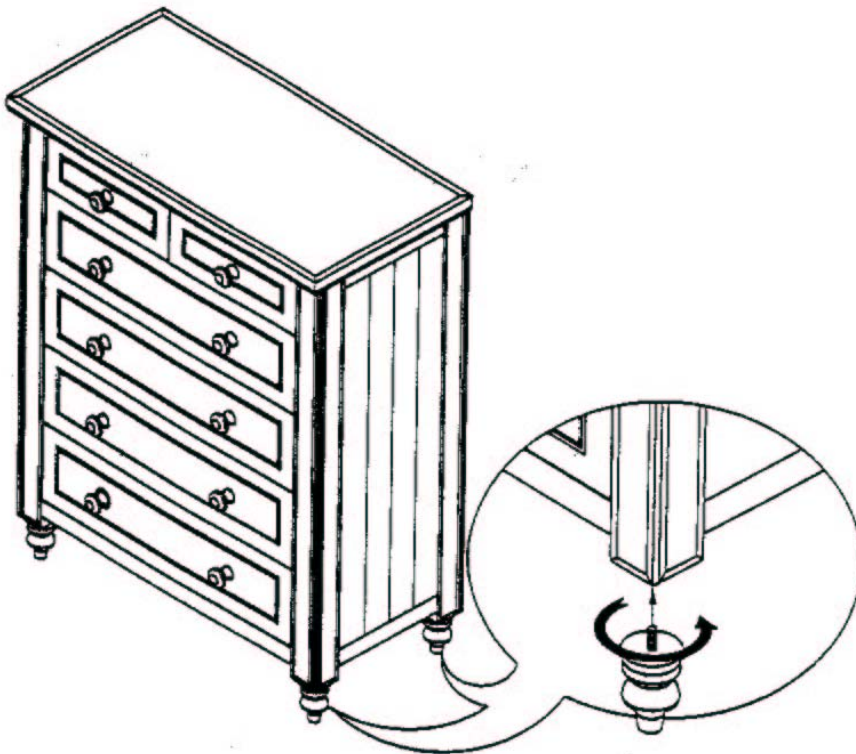
### PARTS INCLUDED:

(4) Turning Feet – A



### ASSEMBLY:

- 1) On a soft, scratch-free surface such as a rug or carpet turn the item over.
- 2) Thread the Feet (A) into the pre-drilled holes at the bottom of drawer chest and tighten firmly.
- 3) Bring drawer chest upright onto its feet.



Thank you for your purchase.

stores | catalog | [www.potterybarnkids.com](http://www.potterybarnkids.com)

USA 1.800.290.8181

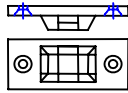
## FURNITURE TIPPING RESTRAINT

Young children may be injured by tipping furniture. The use of a tipping restraint is highly recommended. When properly installed, this restraint could provide protection against the unexpected tipping of furniture due to small tremors, bumping or climbing. We recommend mounting this restraint to a wall stud.

**WARNING:** This product is only a deterrent. It is not a substitute for proper adult supervision.

**Hardware Included:**

(2) Brackets 48x21x10mm



(2) Long screws 6x32mm



(2) Short screws 6x19mm



(1) Nylon strap 255x12x8mm



### INSTALLATION INSTRUCTIONS:

1. Locate a wall stud behind your furniture, Position a bracket on the stud approximately 1" below the top of the furniture. Mark and drill pilot hole into the center of the stud with a 3/32" drill bit. Attach a bracket to the stud with the long screws provided.
2. On the back of the furniture, a bracket will need to be attached to the furniture frame at the top. To do this, temporarily move the furniture into its final position and mark the location of the wall bracket on the furniture frame. Move the furniture away from the wall and place a bracket on the mark. Mark and drill holes for screws with a 3/32" drill bit. Attach the bracket to the furniture with the short screws provided.
3. Move the furniture into its final position, taking care to line up the wall bracket with the furniture bracket. Thread strap through the bracket as shown in the illustration. Tighten strap until snug. Do not over tighten.

